

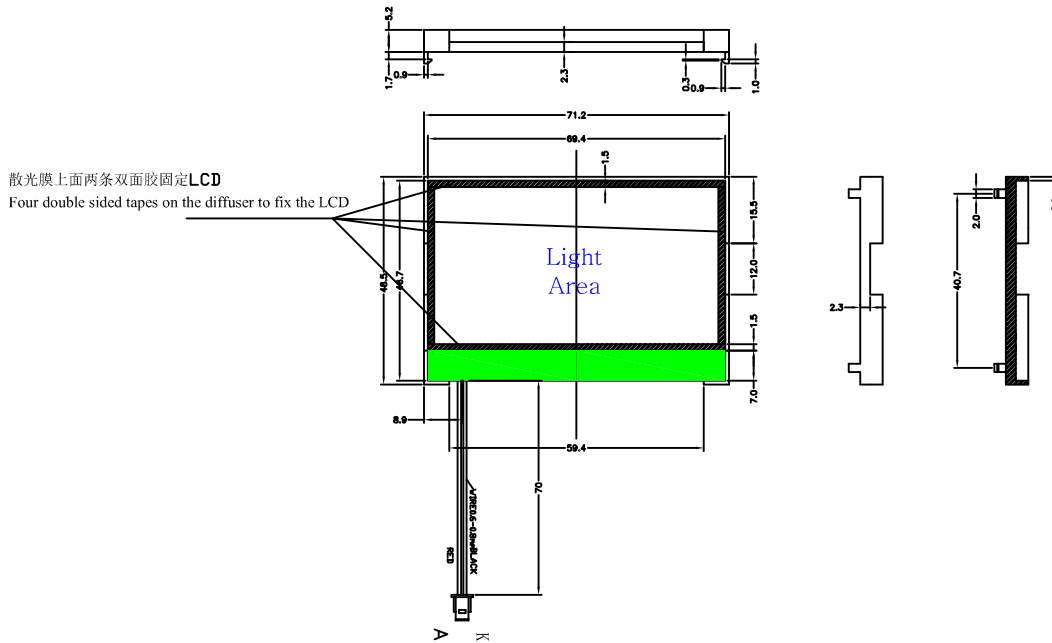
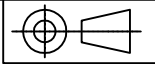


## 1. 结构尺寸 MECHANICAL OUTLINE

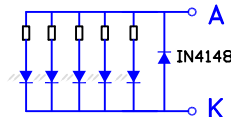
(未注尺寸公差 Unspecified Tolerances is  $\pm 0.3$ )

COLOR : WHITE

颜色 : 白色



## 2. 电路图 CIRCUIT DIAGRAM (LED 1X5=5 SMD dies)



## 3. 保存和焊接条件 STORAGE & SOLDERING CONDITIONS:

- Store with care. Storing the units in bad condition will cause the reflector sheet and decrease its adhesive power. Storage The products under the condition: temperature ( $25^{\circ}\text{C} \pm 10^{\circ}\text{C}$ ) and humidity ( $65\% \text{RH} \pm 20\% \text{RH}$ ) our recommendation.
- The Soldering Temperature is  $260 \pm 5^{\circ}\text{C}$  and Soldering Time should be less than 3 sec, and soldering iron power should be less than 30W.
- The soldering point should be farther than 1.6mm ( $1/10''$ ) from body .
- The product is sensitive to static electricity, So it's necessary to take proper steps when storing and soldering.
- 注意保存, 保存条件不好时, 会降低反光膜(扩散膜)导光片(反射壳)的粘附力。  
推荐保存条件: 温度  $25^{\circ}\text{C} \pm 10^{\circ}\text{C}$   
湿度  $65\% \text{RH} \pm 20\% \text{RH}$
- 焊接温度  $260^{\circ}\text{C} \pm 5^{\circ}\text{C}$ , 焊接时间小于3秒  
烙铁功率小于 30W.
- 焊接点应离焊接实体大于1.6mm.
- 产品对静电敏感, 保存及焊接时必须要有防静电措施.

2					DESIGN: RZK 设计
1					CHECKED: 检查
ISSUE	AMENDMENT	DATE			COUNTERSIGN: 会签
DRAWING NO.: LG-R173SW		REV: A0	SHEET: 1 OF 2	DATE: 2009.5.19	APPROVED: 批准



## 4. 极限参数 ABSOLUTE MAXIMUM RATINGS (SINGLE LED)

(除非特别说明, 环境温度  $T_a=25^{\circ}\text{C}$ . Unless specified, The Ambient temperature  $T_a=25^{\circ}\text{C}$ )

项目 Item	符号 Symbol	条件 Conditions	值 Rating	单位 Unit
* 极限直流正向电流 Absolute maximum forward current	Ifm		25	mA
* 脉冲驱动时极限正向电流 Peak forward current	Ifp	1 msec 脉冲, 1/10 占空比 1 msec Plus 10% Duty Cycle	60	mA
反向电压 Reverse Voltage	Vr		5	V
* 极限功耗 Power dissipation	Pd		50	mW
工作温度 Operating Temperature Range	Topr		-30~+70°C	°C
贮存温度 Storage Temperature Range	Tstg		-40~+80°C	°C

\* 当工作温度高于  $25^{\circ}\text{C}$  时, Ifm, Ifp 和 Pd 必须降低; 电流降低率是  $-0.36 \text{ mA}/^{\circ}\text{C}$  (直流驱动), 或  $-0.86 \text{ mA}/^{\circ}\text{C}$  (脉冲驱动), 功率降低率是  $-0.75 \text{ mW}/^{\circ}\text{C}$ . 产品工作电流不能大于对应的工作条件温度 Ifm 或 Ifp 的 60%.

For operation above  $25^{\circ}\text{C}$ , The Ifm Ifp & Pd must be derated, the Current derating is  $-0.36 \text{ mA}/^{\circ}\text{C}$  for DC drive and  $-0.86 \text{ mA}/^{\circ}\text{C}$  for Pulse drive, the Power dissipation is  $-0.75 \text{ mW}/^{\circ}\text{C}$ . The product working current must not more than the 60% of the Ifm or Ifp according to the working temperature.

## 5. 电光特性 ELECTRICAL-OPTICAL CHARACTERISTICS

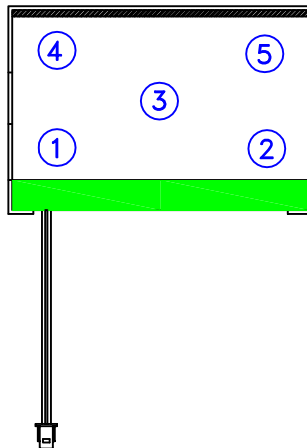
(除非特别说明, 环境温度  $T_a=25^{\circ}\text{C}$ . Unless specified, The Ambient temperature  $T_a=25^{\circ}\text{C}$ )

项目 Item	符号 Symbol	最小值 min.	典型值 typ.	最大值 max.	单位 Unit	测定条件 Condition
正向电压 Forward Voltage	Vf	3.1	3.3	3.5	V	If= 75 mA
反向电流 Reverse Current	Ir			10	Am	Vr= 0.8 V
峰值波长 Peak wave length	$\lambda_p$				nm	If= 75 mA
频谱半宽度 Spectral Line Half width	$\Delta\lambda$		20		nm	If= 75 mA
* 亮度 Luminance	Lv				cd/m <sup>2</sup>	If= 75 mA

\* 亮度值是5个测量点的平均值, 亮度最大值比最小值一般小于等于1.3. 使用 ST-86LA 亮度计测量, 测量光圈  $\phi 5 \text{ mm}$ .

The luminance is the average value of 5 points, and, The Lvmax./Lvmin. is 1.3 max.

The measurement instrument is ST-86LA luminance, Colorimeter. The caperture is  $\phi 5 \text{ mm}$ .



DESIGN:	RZK
设计	
CHECKED:	
检查	
COUNTERSIGN:	
会签	
APPROVED:	
批准	